



规格说明书 (Specification)

● 产品尺寸 (Dimensions)

Size 7555mm/2920mils

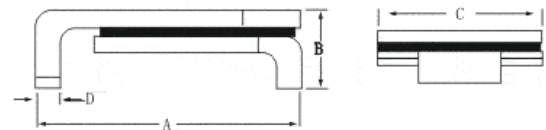
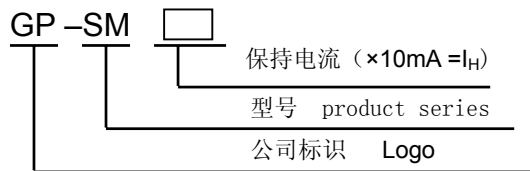
(供参考 For your information, 单位: mm)

Part number	A	B	C	D
	Max.	Max.	Max.	Min.
GP-SM030	7.98	3.18	5.44	0.70
GP-SM050	7.98	3.18	5.44	0.70
GP-SM075	7.98	3.18	5.44	0.70
GP-SM110	7.98	3.18	5.44	0.70
GP-SM125	7.98	3.18	5.44	0.70

Size 8763mm/3425mils

Part number	A	B	C	D
	Max.	Max.	Max.	Min.
GP-SM130	9.50	3.00	6.71	0.70
GP-SM150	9.50	3.00	6.71	0.70
GP-SM185	9.50	3.00	6.71	0.70
GP-SM200	9.50	3.00	6.71	0.70
GP-SM250	9.50	3.00	6.71	0.70

● 型号说明 (Outline drawing)



● 主要电气特性 (Electrical Characteristics)

Part number	I _H	I _T	V _{max}	I _{max}	T _{trip} (S)		R _{min}	R _{1max}
	(A)	(A)	(V)	(A)	Current(A)	Time(S)	(Ω)	(Ω)
GP-SM030	0.30	0.60	60	10	1.5	3.00	0.700	4.800
GP-SM050	0.50	1.00	60	10	2.5	4.00	0.350	1.400
GP-SM075	0.75	1.50	30	40	8.0	0.30	0.290	1.000
GP-SM110	1.10	2.20	30	40	8.0	0.50	0.100	0.480
GP-SM125	1.25	2.50	15	40	8.0	2.00	0.070	0.250
GP-SM130	1.30	2.60	33	40	8.0	4.00	0.080	0.280
GP-SM150	1.50	3.00	33	40	8.0	5.00	0.060	0.250
GP-SM185	1.85	3.70	33	40	8.0	5.00	0.045	0.165
GP-SM200	2.00	4.00	15	40	8.0	12.00	0.045	0.125
GP-SM250	2.50	5.00	15	40	8.0	25.00	0.025	0.085



- 1.保持电流 I_H : 25°C静止空气环境中不触发电阻突越的最大电流;
 I_H =Hold current: maximum current at which the device will not trip at 25°C still air.
- 2.动作电流 I_T : 25°C静止空气环境中触发产品的最小电流;
 I_T =Trip current: minimum current at which the device will always trip at 25°C still air.
- 3.最大电压 V_{max} : PTC 自复保险丝的最大工作电压;
 V_{max} =Maximum voltage device can withstand without damage at rated current.
- 4.最大电流 I_{max} : PTC 自复保险丝能承受的最大电流;
 I_{max} =Maximum fault current device can withstand without damage at rated voltage.
- 5.动作时间 T_{trip} : 在 5 倍保持电流下产品发生动作的时间最大值;
 T_{trip} =Maximum time to trip(s) at $5I_H$.
6. R_{min} : 25°C下, 动作前最小电阻值;
 R_{min} =Minimum device resistance at 25°C prior to tripping.
7. R_{max} : 25°C下, 动作前最大电阻值。
 R_{max} =Maximum device resistance at 25°C prior to tripping.

● 典型 T-I 关系表 (A) Typical T-I Derating Form

Part number	Maximum ambient operating temperatures (°C)									
	-40	-20	0	20	25	40	50	60	70	85
GP-SM030	0.48	0.41	0.35	0.32	0.30	0.25	0.23	0.19	0.15	0.10
GP-SM050	0.80	0.71	0.59	0.52	0.50	0.44	0.38	0.32	0.26	0.19
GP-SM075	1.21	1.05	0.89	0.78	0.75	0.64	0.56	0.49	0.41	0.28
GP-SM110	1.75	1.54	1.32	1.15	1.10	0.96	0.83	0.73	0.61	0.42
GP-SM125	1.99	1.75	1.51	1.30	1.25	1.07	0.94	0.83	0.69	0.46
GP-SM130	2.05	1.84	1.59	1.32	1.30	1.12	0.94	0.87	0.73	0.49
GP-SM150	2.42	2.10	1.81	1.52	1.50	1.30	1.11	1.01	0.85	0.57
GP-SM185	2.96	2.62	2.26	1.88	1.85	1.59	1.36	1.26	1.03	0.69
GP-SM200	3.19	2.84	2.45	2.06	2.00	1.75	1.46	1.36	1.12	0.76
GP-SM250	3.99	3.54	3.06	2.56	2.50	2.18	1.85	1.71	1.41	0.94

● 注意事项 (Notice)

1. 建议先行试焊以确定本产品适合用户的焊接工艺;
Try to weld before use.
2. 储存环境温度应在-40°C~+55°C之间, 相对湿度小于 85%RH, 空气中没有酸性等腐蚀性的化学气体;
Storage condition: temperature: -40°C to +55°C, Humidity aging: ≤85%R.H., no acidulated or caustic airs around.
3. 本产品温度影响下, 电阻值的微小变化属其本身特性, 电气性能正常;
Little change of the resistance affected by the temperature is normal. No influence to it's electrical characteristics.